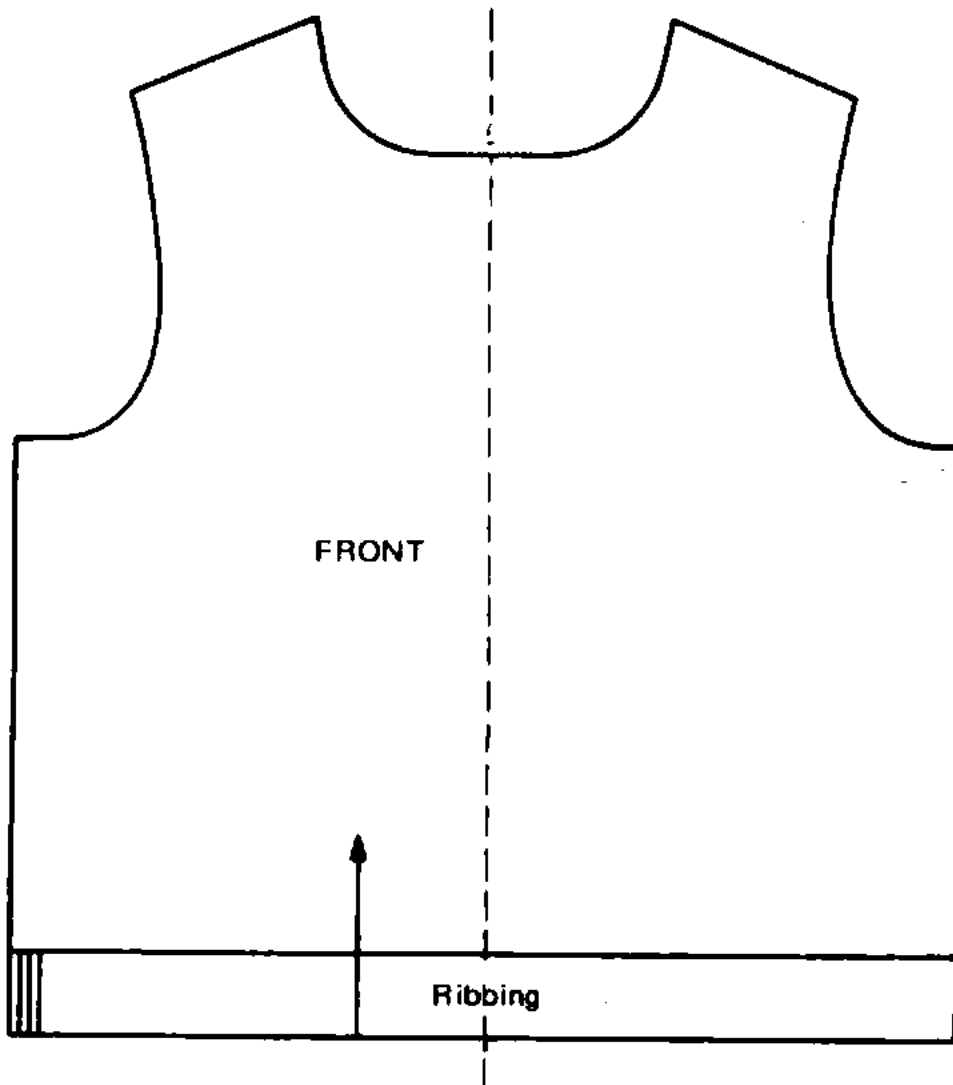


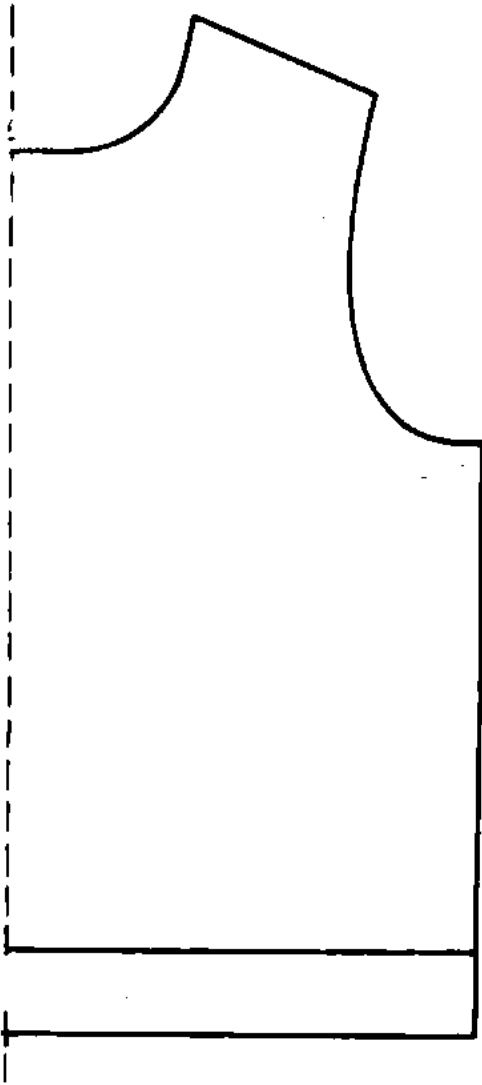
## How to Resize a Pattern to 1/2 (or 1/4) Size

-by Tanya Cunningham

Please use attribution if you share this document.

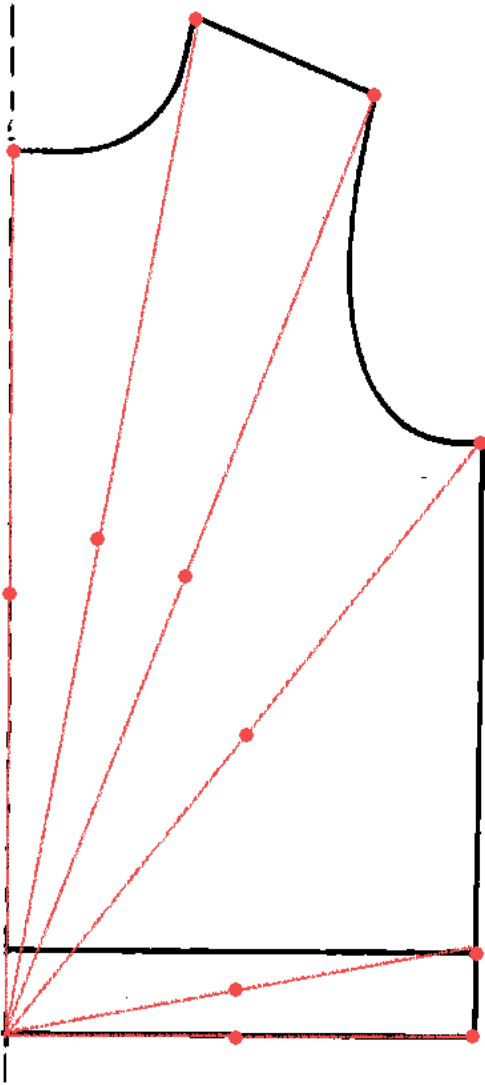
Assuming your pattern piece is symmetrical, fold or cut in half vertically. You will work with only one half of the pattern. This method may not work with especially large, or asymmetrical pieces.



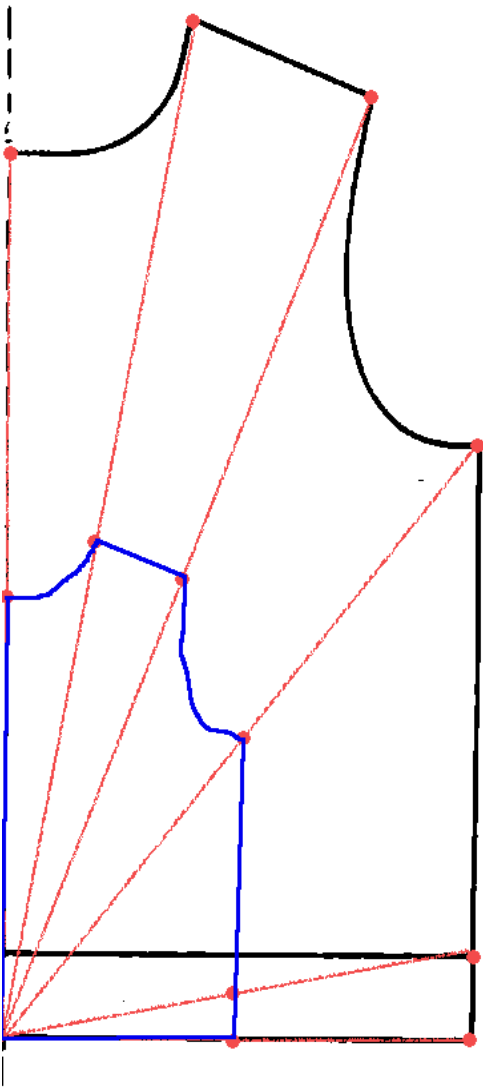


Once you have your pattern divided, take a long straight edge and draw a straight line from each point where the outline changes direction to a central point. Usually the easiest is to use point where the bottom edge meets the middle, vertical line. Draw a line from each of the outer points to that central point.

Now, measure each line, and locate the center, halfway point and mark it. (NOTE: If you are reducing to 1/4 size, divide the length of each line by 4, and mark 1/4 distance from the center point at the bottom edge.)



Finally, connect the marks, using straight, or curved lines to match the larger pattern.



This is your 1/2 sized pattern. (1/4 would be even smaller.)

