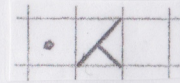


## HAND

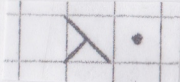
## MACHINE

Left slanting decrease  
k2togtbl = ssk, p2togtbl.



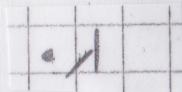
Two step, right side, deletion  
1.) transfer marked stitch to needle on the left  
2.) return both stitches to marked needle

Right slanting decrease  
k2tog, p2tog



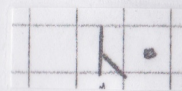
Two step, left side, deletion  
1.) transfer marked stitch to needle on the right  
2.) return both stitches to marked needle

Left slanting decrease.  
SKP = s1-k1-pss0



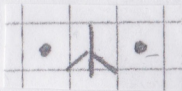
One step, right side, deletion  
1.) transfer stitch on needle to the left to marked needle

Right slanting decrease.  
k1-s1-pss0



One step, left side, deletion  
1.) transfer stitch on needle to the right to marked needle

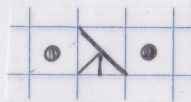
Double vertical decrease.  
s2knitwise-k1-p2sso



Double vertical deletion  
1.) transfer individually one stitch from each side to marked needle



Double left slanting decrease.  
s1-k2tog-ssso

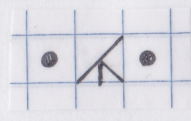


Three step, left slanting, double deletion

- 1.) transfer stitch on marked needle to first needle on the left
- 2.) transfer both stitches to first needle with a stitch on the right
- 3.) transfer three stitches left to empty marked needle

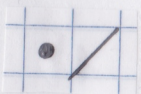


Double right slanting decrease  
SKP(= s1-k1-ssso)-return st.  
to left needle & pass next st.  
over.



Three step, right slanting, double deletion

- 1.) transfer stitch on marked needle to first needle on the right
- 2.) transfer both stitches to first needle with a stitch on the left
- 3.) transfer three stitches right to empty marked needle



Stitch transferred to right side empty needle



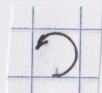
Stitch transferred to left side empty needle



Empty needle in work

○ Yarn-over

∞ M1 make one right



M1 counterclockwise

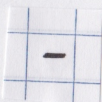
- 1.) lift the yarnover between two stitches from back to front with single eye transfer tool
- 2.) rotate the eye 180 degrees counterclockwise.
- 3.) return stitch to empty needle

∞ M1 make one left



M1 clockwise

- 1.) lift the yarnover between two stitches from back to front with single eye transfer tool
- 2.) rotate the eye 180 degrees clockwise .
- 3.) return stitch to empty needle



Take needle out of work